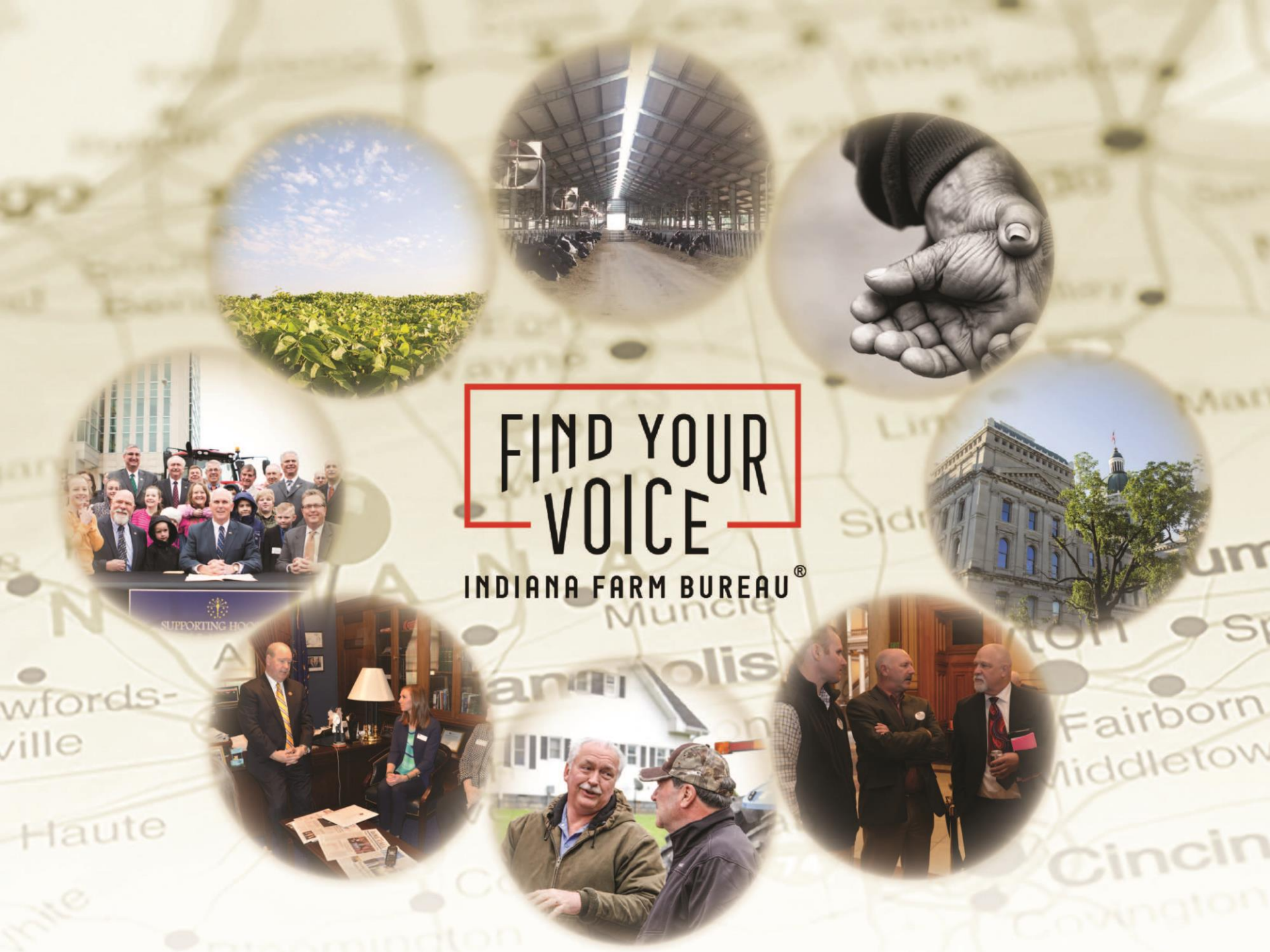




FIND YOUR VOICE

INDIANA FARM BUREAU®



Questions to Consider

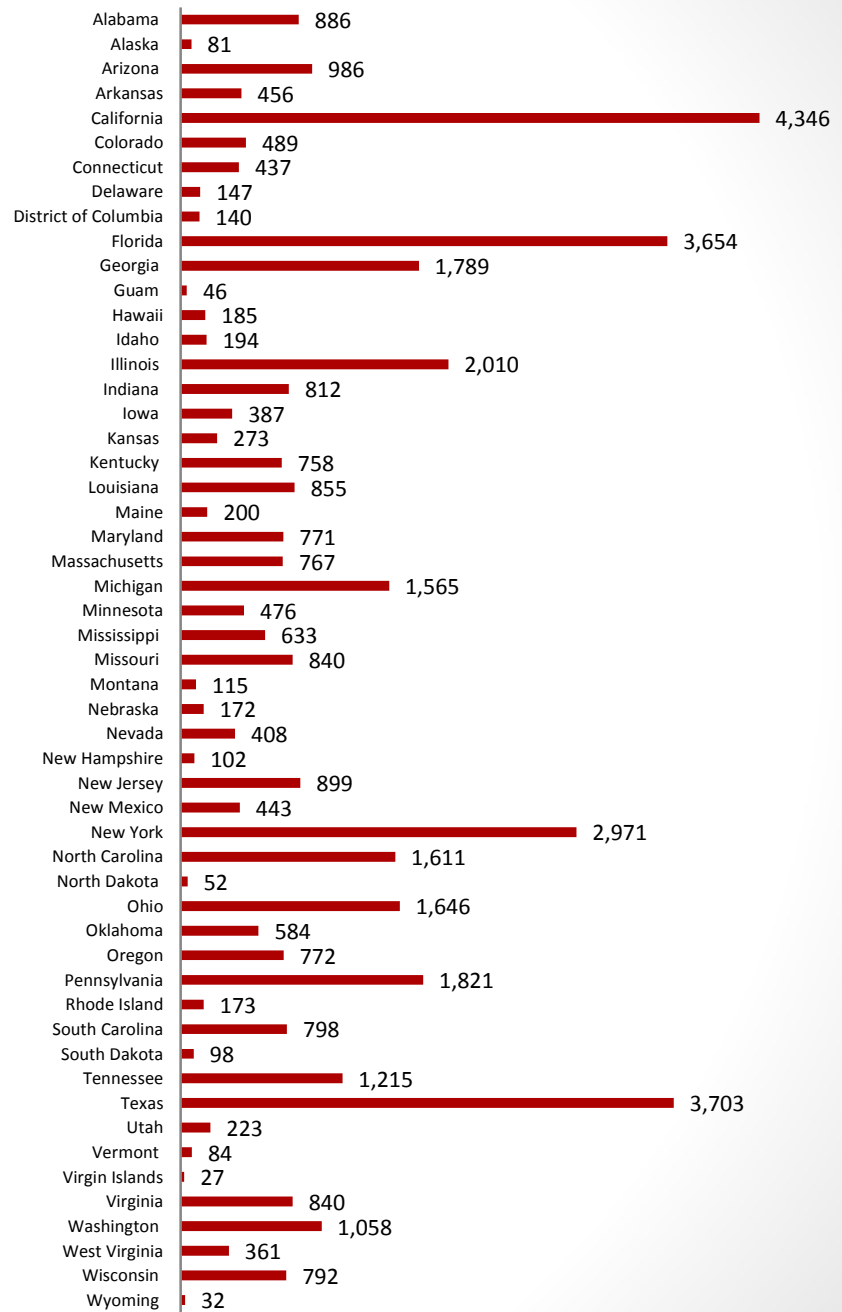
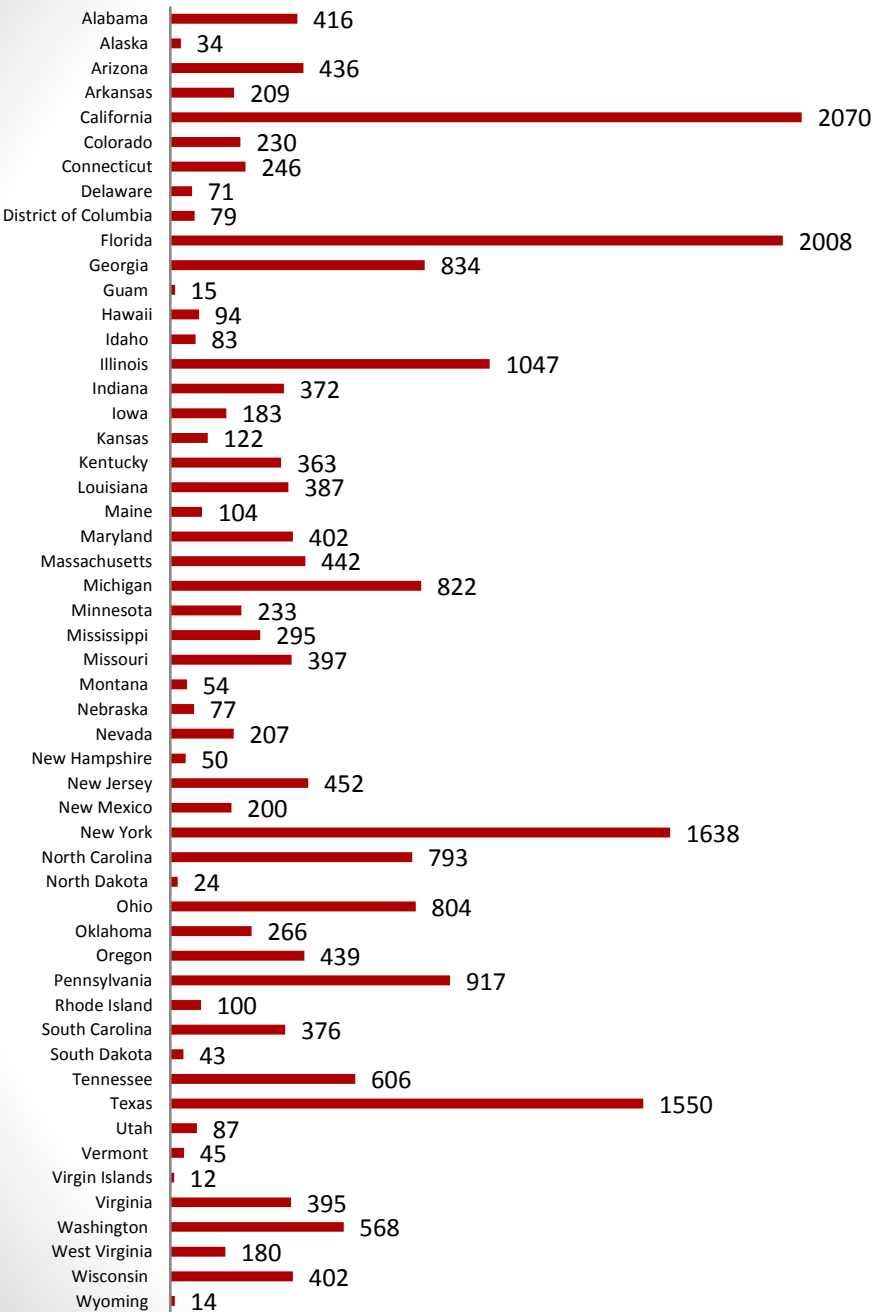
- What are the goals for Indiana's future in agriculture?
- Given the farm economic conditions, what do farmers need help with?
- What are your farm's priorities moving forward?
- What role do you see yourself having in the next years related to agriculture?
- What role would you like to see the Farm Bill play?

IV. Nutrition

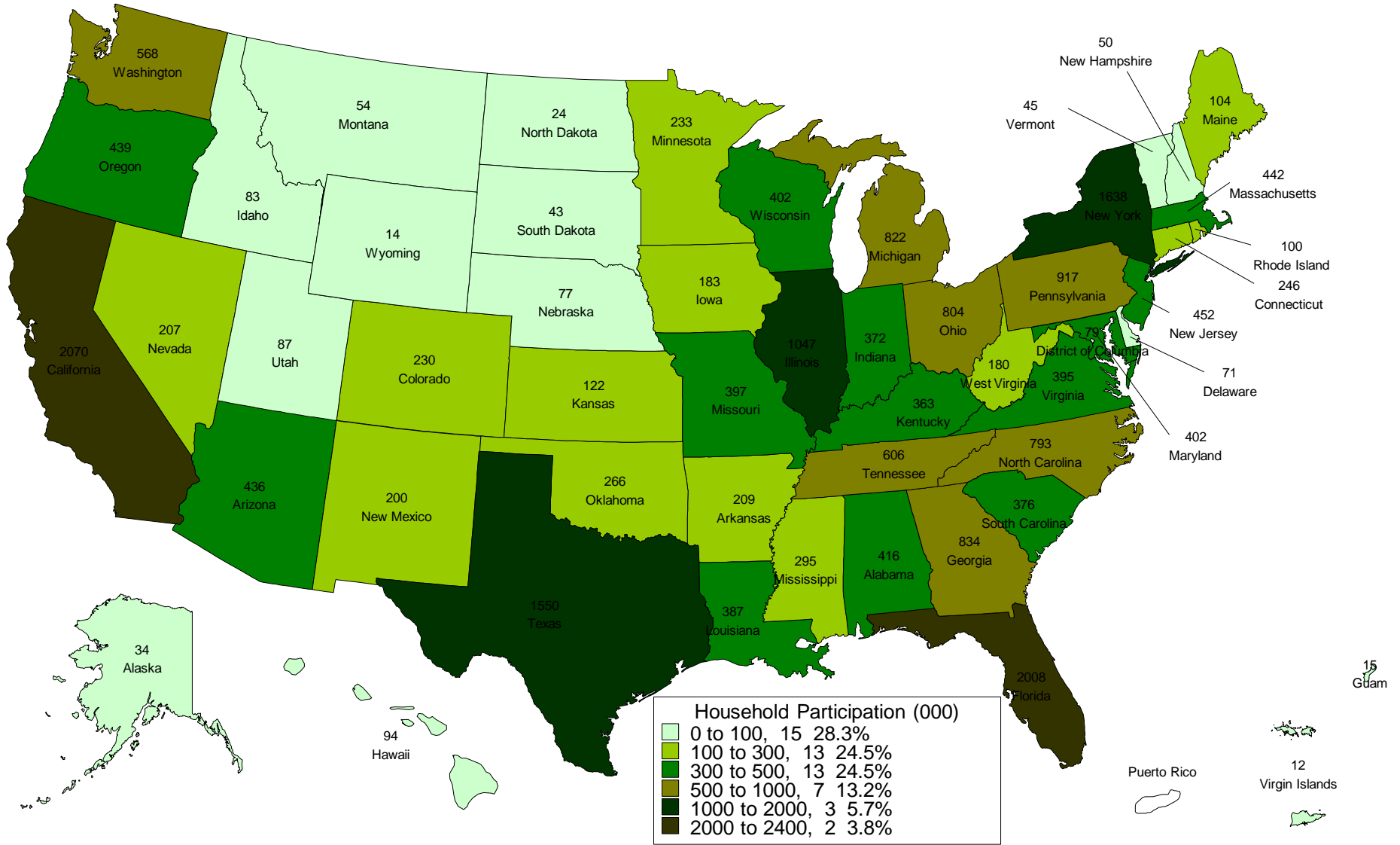
Supplemental Nutrition Assistance Program (SNAP)

2015 SNAP households (000)

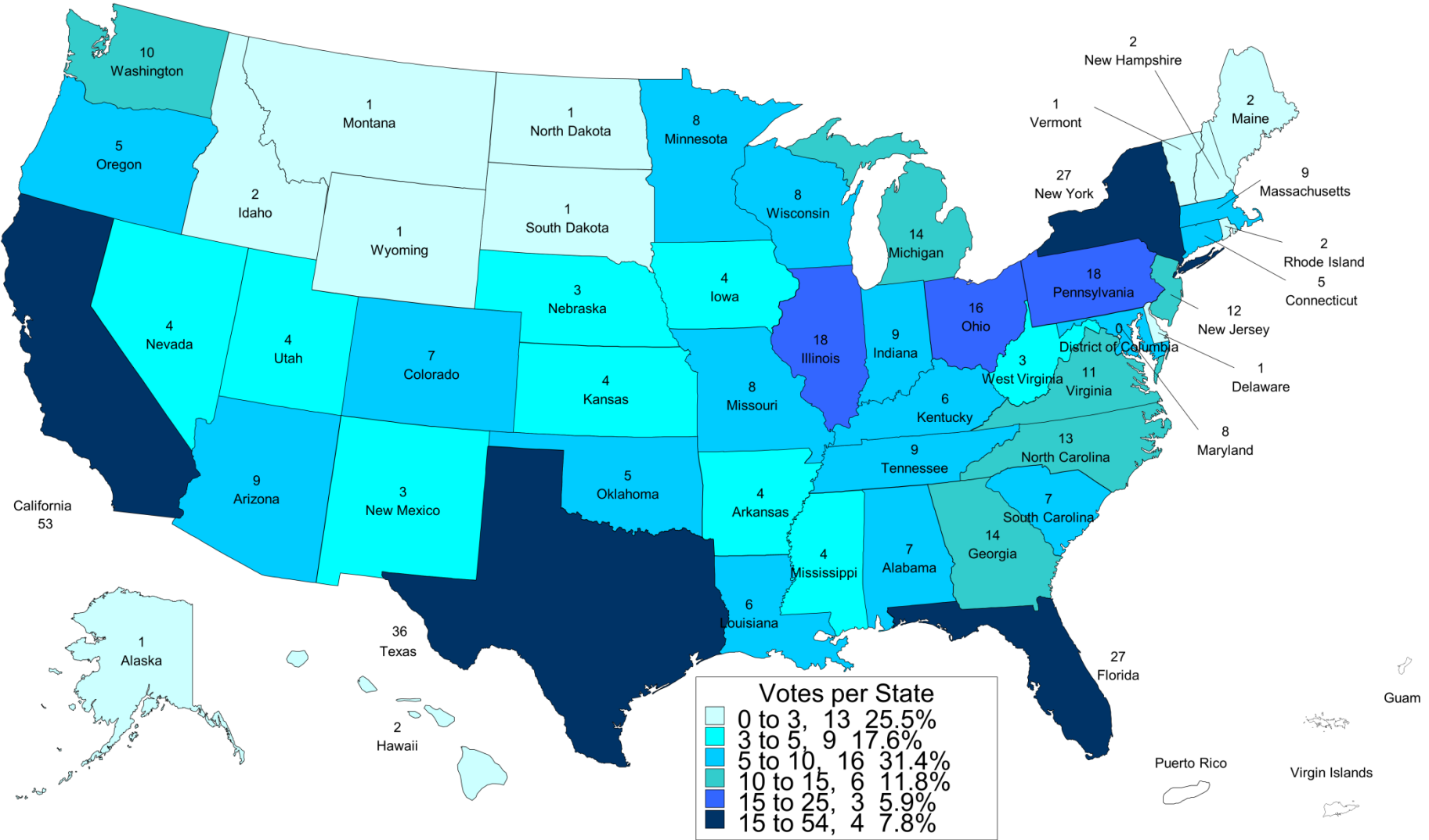
2015 SNAP Participants in households (000)



Distribution of SNAP participating households by State

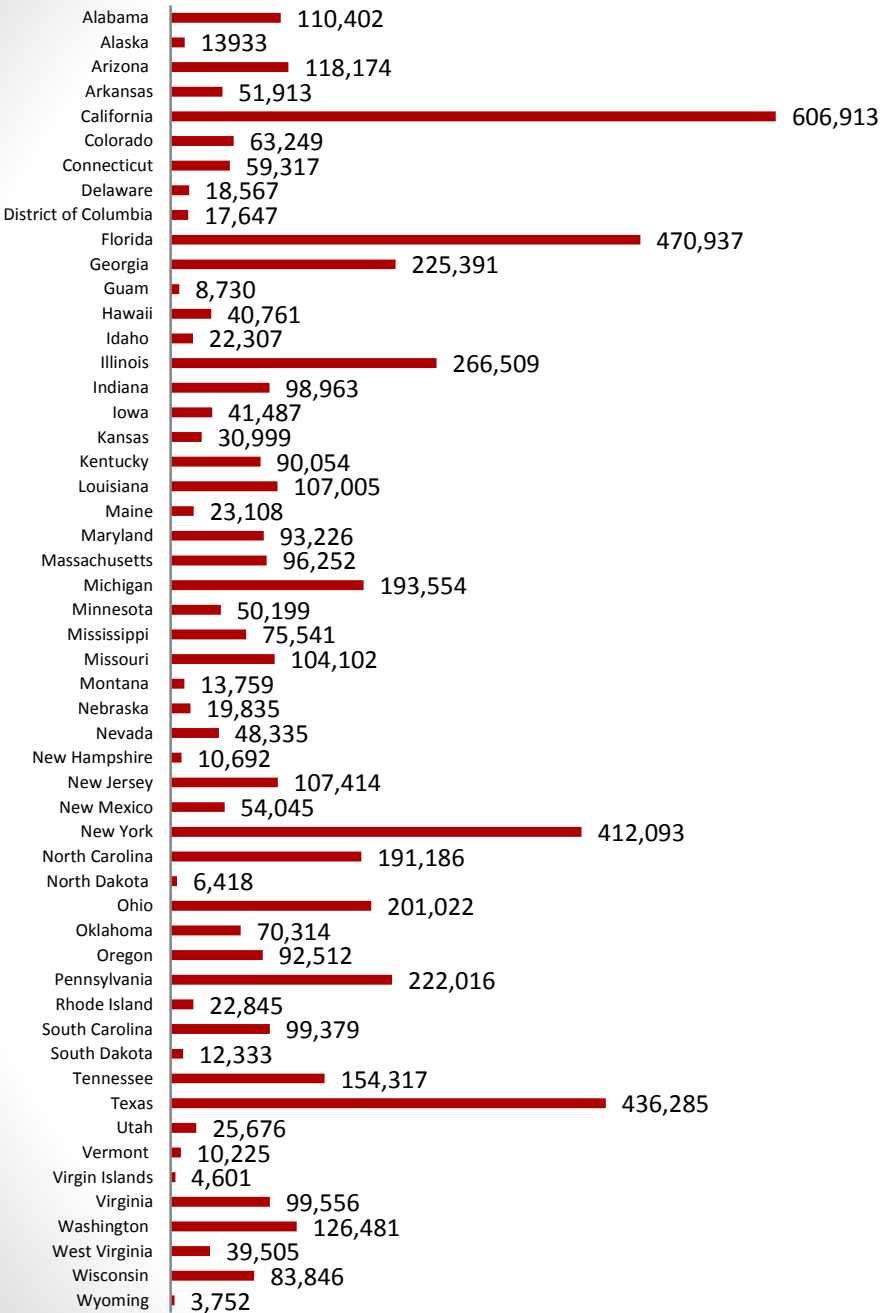


US House of Representative Votes



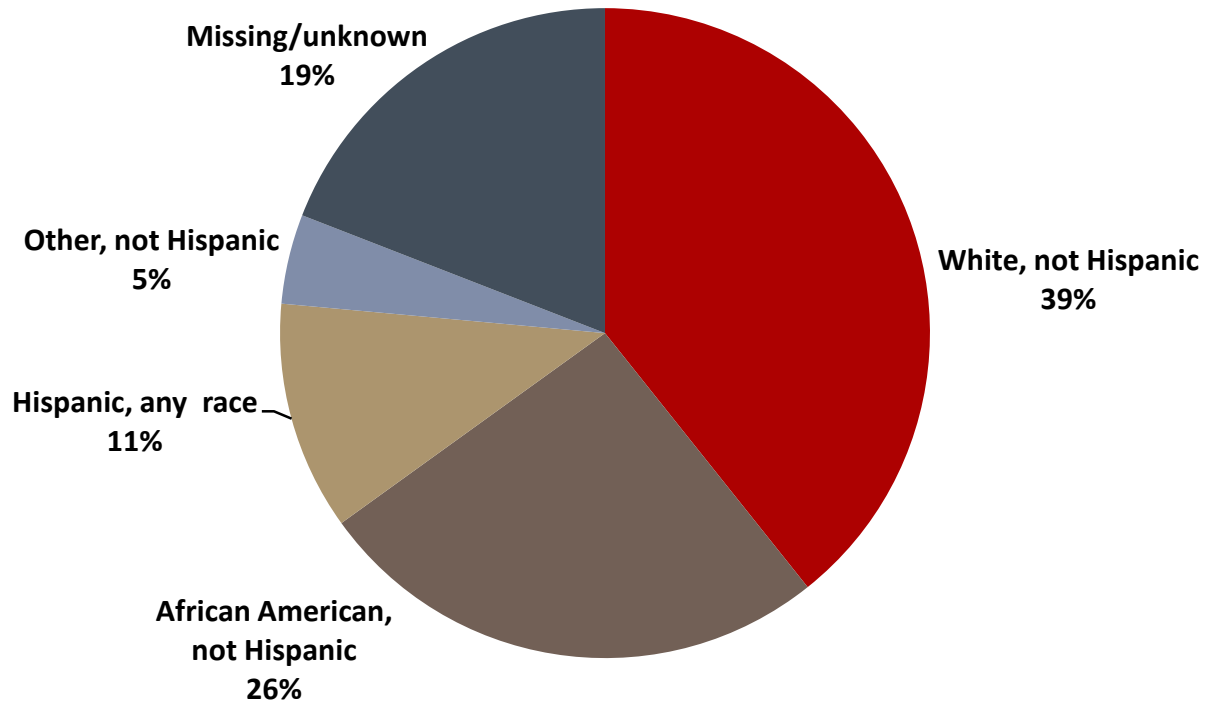
| Most Populous States | Population, 2015 | SNAP Household Participation Largest to Smallest, 2015 | |
|-----------------------------|-------------------------|---|-----------|
| California | 39,144,818 | California | 2,070,000 |
| Texas | 27,469,114 | Florida | 2,008,000 |
| Florida | 20,271,272 | New York | 1,638,000 |
| New York | 19,795,791 | Texas | 1,550,000 |
| Illinois | 12,859,995 | Illinois | 1,047,000 |
| Pennsylvania | 12,802,503 | Pennsylvania | 917,000 |
| Ohio | 11,613,423 | Georgia | 834,000 |
| Georgia | 10,214,860 | Michigan | 822,000 |
| North Carolina | 10,042,802 | Ohio | 804,000 |
| Michigan | 9,922,576 | North Carolina | 793,000 |

2015 Monthly SNAP benefits Dollars (000)

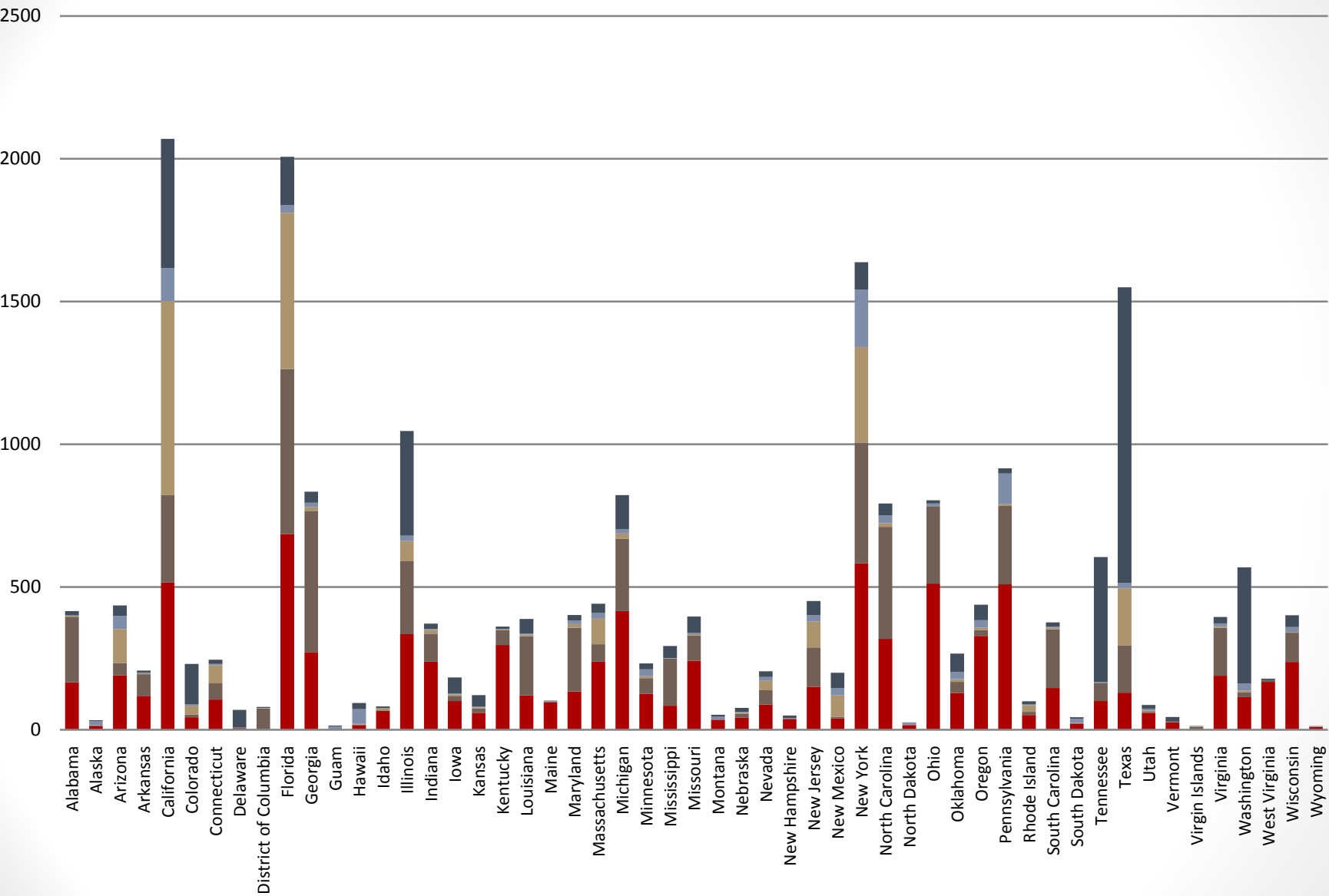


| United States 2015 SNAP Participation | |
|---------------------------------------|-----------------|
| SNAP households | 22,293,000 |
| SNAP Participants in households | 45,184,000 |
| Monthly SNAP benefits | \$5,667,680,000 |

Race and Hispanic status of SNAP participating household head in US



Distribution of participating households by race and Hispanic status of household head and by State



White, not Hispanic Number (000)

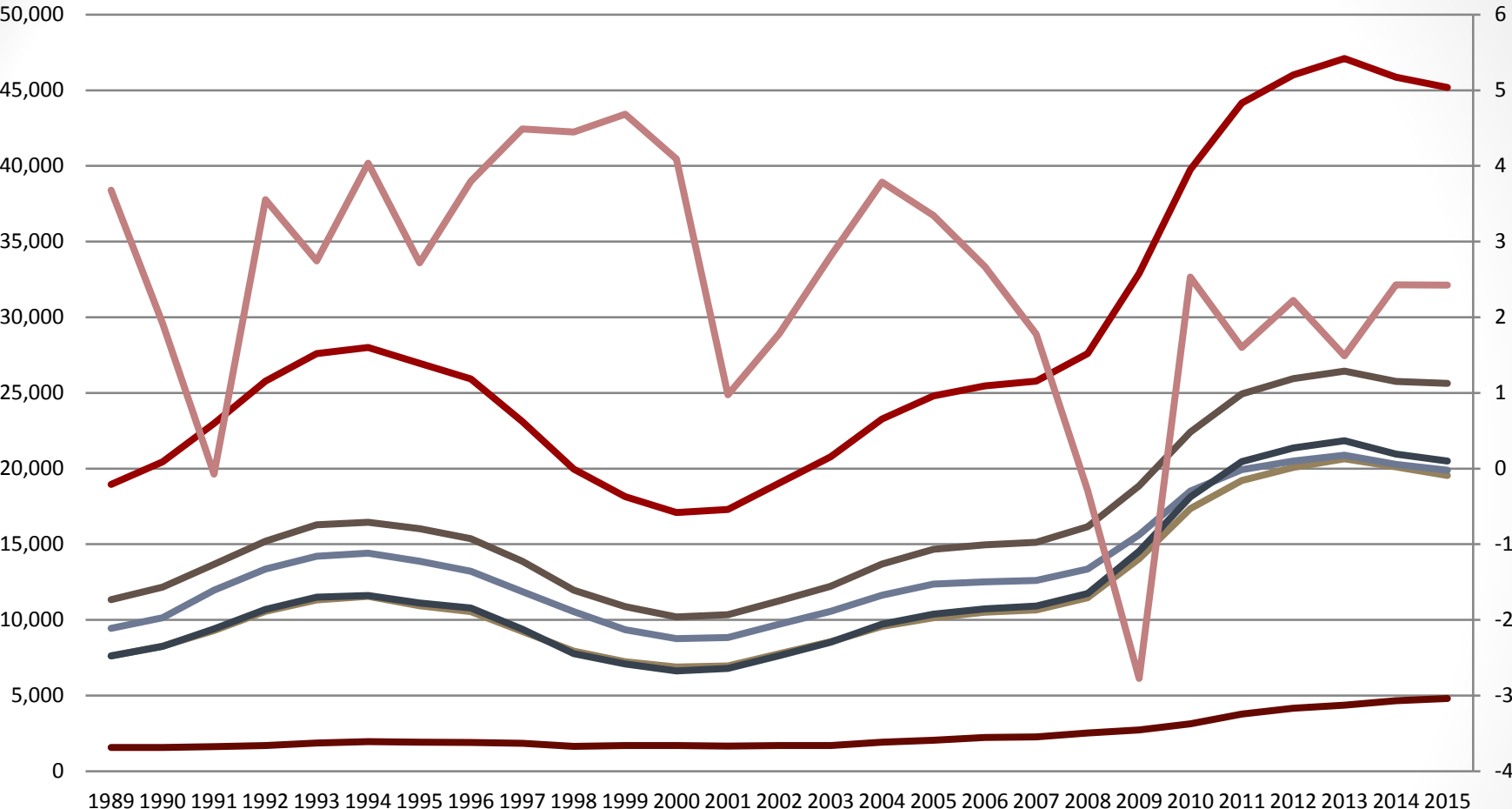
African American, not Hispanic Number (000)

Hispanic, any race Number (000)

Other, not Hispanic Number (000)

Missing/unknown Number (000)

Comparison of number of SNAP participants by gender and age for fiscal years 1989 to 2015



- Total participants (000)
- Female participants (000)
- Male participants (000)
- Children (age 0 to 17) (000)
- Non-elderly adults (age 18 to 59) (000)
- Elderly individuals (age 60 or older) (000)
- US GDP growth (annual %)